



Ocean Data System
ELECTRONIC MARINE SOLUTIONS

UpSideUp
MASTER



The best way to sail faster and further, serenely

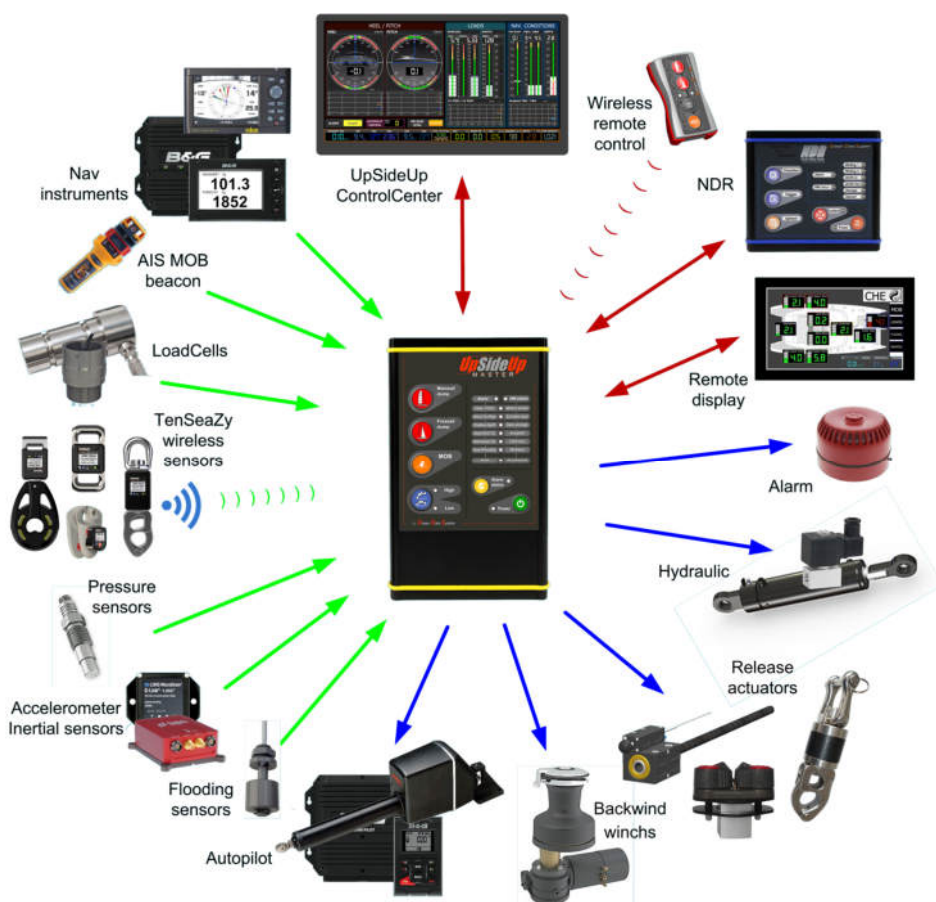
Thanks to its multiple possibilities, UpSideUp Master is an essential safety solution

A wide range of functions and advanced control:

An "à la carte" configuration for racing and cruising sailing boats

- Anti-capsize function - Heeling and pitch poling limiter
- Control of the loads in the running and standing rigging
- Advanced Man Overboard function
- Management of critical situations (collision, shallows, wind gusts)
- Flooding detection
- Multi-alarm management
- Data logging

And many other possibilities on request...



An **ODS DEVELOPMENTS** solution



Features (according to options)

- User friendly software "UpSideUp ControlCenter" for monitoring and setup
- 2 release profiles and user changeable sensibility
- Connection of the electro-mechanical actuators on 6 direct relay outputs and on CAN bus
- Autopilot control for heel regulation and emergency stop
- Dedicated network for flooding sensors and detectors spread in the boat
- Management of the sailing contexts "upwind" / "downwind" and "windward" / "leeward"
- UpSideUp events/data logging to improve setup and post processing
- Advanced tuning of the triggers thresholds and filtering
- Preventive alarm (3 levels) before release actions
- Embedded motion sensor or inertial motion sensor
- Wireless remote control and manual control panel
- Test functions and control indicators

Data triggers :

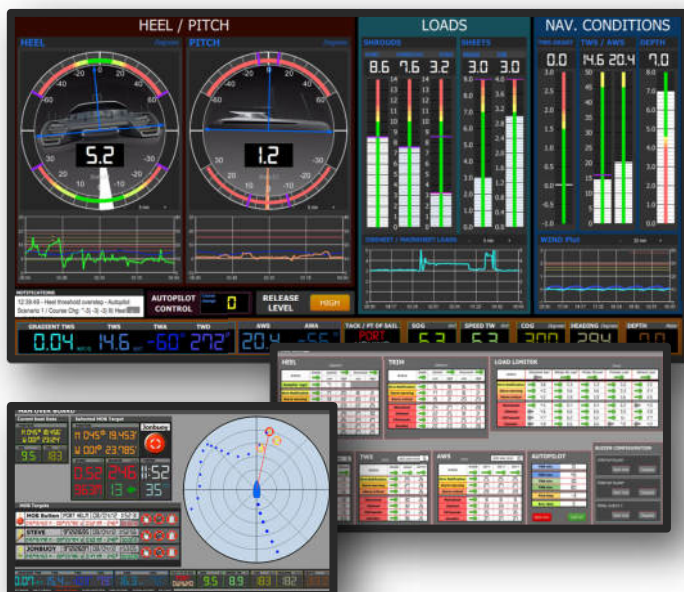
- Heel, pitch poling
- Load on sheets and rigging
- Wind speed and wind speed gradient
- Water depth
- Man Over Board detector
- Obstacles, collisions...

More widely,

- Any analogue sensor
- Any device emitting an electrical signal
- Any NMEA data



UpSideUp ControlCenter



Provided in the **UpSideUp Master** package, the « **UpSideUp ControlCenter** » software gives you total control of your security:

- User and system settings - Fully adaptable to the user's needs
- System monitoring
- System administration
- Not required for standard UpSideUp features
- Window®, Linux®, Mac OS® compatible

Number of release profiles	2
Alarm management	yes
Integrated buzzer / Output for external alarm	1 / 1
Relay outputs (standard / extension)	6 / unlimited
Analogue inputs / Digital inputs (standard)	7 / 5
Analogue output / PWM	Option
Upwind / downwind context management	yes
Leeward-windward context management	yes
NMEA Input /output - RS232 input /output	1 / 1 - 3 / 3
CAN bus (standard / option)	1 HS / 2 HS or LS
UpSideUp ControlCenter software	yes
Wireless remote control	Option
UpSideUp event recording with current data	yes
Outputs status indicators	yes
Commands for Manual release or other action	yes
Anti-capsize function (Heel and Trim)	yes
Wind strengthening and water depth trigger	yes
Flooding detection	Option
Multi-alarm function	Option
Autopilot control	Option
Data logging function (NDR)	Option
Power supply : voltage / power	10/32 vdc - 1.7 W
Weight main unit	700 g
Dimensions main unit	H220 x L130 x P36



Ocean Data System
ELECTRONIC MARINE SOLUTIONS

3 Ter Rue Roger Salengro
56100 Lorient — France
Tel : +33 (0)2 97 87 92 65
Email : info@oceandatasystem.com
Internet : www.oceandatasystem.com